



# PROPERTIES OF TAK MATERIALS (TAK 材質表)

Mn-Zn Ferrite Series (For High  $\mu$  MATERIALS) 錳-鋅氧化磁鐵粉系列(高頻使用)

CHARACTERISTICS(特性)	UNIT(單位)	T2	T3	T5	T7	TP40	T10	T2M
$\mu$ iac (初透磁率)	----	2800	3500	5500	7500	2400	9800	2000
APPLICABLE 適用 FREQUENCY 頻率	MHZ(百萬赫茲)	<0.4	<0.2	<0.1	<0.1	<0.4	<0.1	<0.5
Bm(飽和磁束密度)	Gauss(高斯)	4800	4600	4000	4000	5100	4500	5100
Br(殘留磁束密度)	Gauss(高斯)	1400	1350	1250	1250	1100	1200	1300
Hc(保持力)	Oersted(奧斯特)	0.15	0.18	0.08	0.07	0.13	0.08	0.12
Tc(居禮溫度)	°C(攝氏)	200	180	110	110	210	140	220
$\alpha$ $\mu$ r(溫度係數)	$\times 10^{-6}/^{\circ}\text{C}$ (攝氏)	4	1.5	1.5	0.6	8	-0.1	6
Tan $\delta / \mu$ iac (相對損失因子)	$\times 10^{-6}$	10	8.0	20	25	5	2	8
d(密度)	g/cm <sup>3</sup> (公克/立方公分)	4.8	4.8	4.9	4.9	4.8	4.8	4.9
$\rho$ (表面阻抗)	$\Omega$ cm(歐姆)	300	30	15	10	650	50	600





Test Report

No. CANEC0803512710

Date: 07 Jul 2008

Page 1 of 4

TAK TECHNOLOGY CO.,LTD
NO.3RD INDUSTRIAL AREA JUZHOU SHIJIE TOWN DONGGUAN CITY GUANGDONG PROVINCE
CHINA

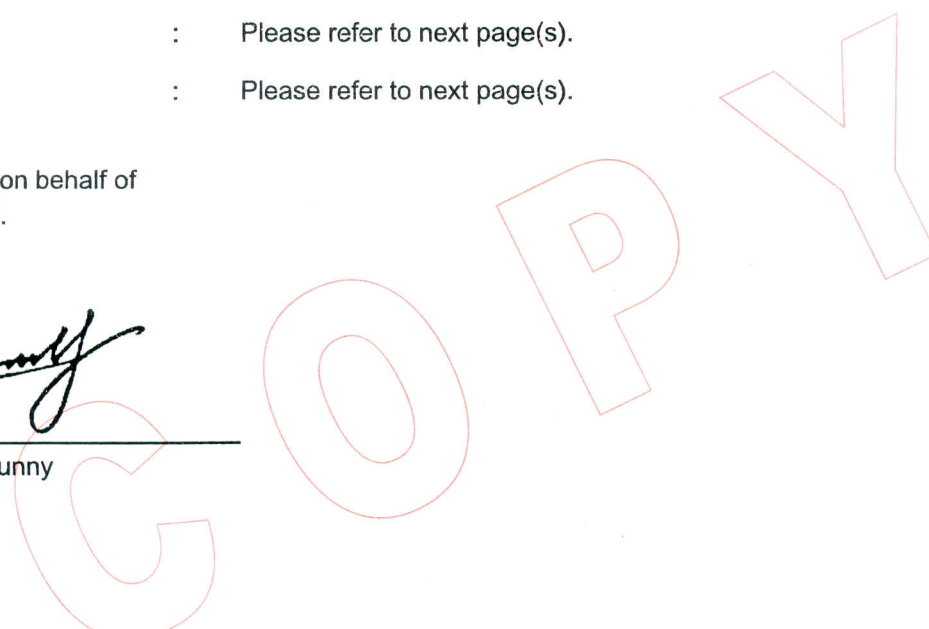
The following sample(s) was/were submitted and identified on behalf of the clients as :
T10 MATERIAL FERRITE CORE

SGS Job No. : 11133899 - SZ
SGS Internal Reference No. : 10.10
Date of Sample Received : 02 Jul 2008
Testing Period : 02 Jul 2008 - 07 Jul 2008
Test Requested : Selected test(s) as requested by client.
Test Method : Please refer to next page(s).
Test Results : Please refer to next page(s).

Signed for and on behalf of
SGS-CSTC Ltd.

[Handwritten signature]

Huang Fang, Sunny
Sr. Engineer



This document is issued by the Company under its General Conditions of Service printed overleaf or available on request and accessible at http://www.sgs.com/terms\_and\_conditions.htm. Attention is drawn to the limitation of liability, indemnification and jurisdiction issues defined therein. Any holder of this document is advised that information contained hereon reflects the Company's findings at the time of its intervention only and within the limits of Client's instructions, if any. The Company's sole responsibility is to its Client and this document does not exonerate parties to a transaction from exercising all their rights and obligations under the transaction documents. Any unauthorized alteration, forgery or falsification of the content or appearance of this document is unlawful and offenders may be prosecuted to the fullest extent of the law. Unless otherwise stated the results shown in this test report refer only to the sample(s) tested. This document cannot be reproduced except in full, without prior approval of the Company.



GZCM 2533071



# Test Report

No. CANEC0803512710

Date: 07 Jul 2008

Page 2 of 4

### Test Results:

ID for specimen 1 : CAN08-035127.010  
 Description for specimen 1 : Dk-gray core

### Heavy metal(s)

Test Item(s)	Unit	Test Method (Reference)	Result	MDL
Cadmium (Cd)	mg/kg	IEC 62321/2nd CDV (111/95/CDV), ICP-OES	N.D.	2
Lead (Pb)	mg/kg	IEC 62321/2nd CDV (111/95/CDV), ICP-OES	N.D.	2
Mercury (Hg)	mg/kg	IEC 62321/2nd CDV (111/95/CDV), ICP-OES	N.D.	2
Hexavalent Chromium (CrVI) by alkaline extraction	mg/kg	IEC 62321/2nd CDV (111/95/CDV), UV-Vis	N.D.	2

### Note:

1. mg/kg = ppm
2. N.D. = Not Detected (< MDL)
3. MDL = Method Detection Limit

COPY

This document is issued by the Company under its General Conditions of Service printed overleaf or available on request and accessible at [http://www.sgs.com/terms\\_and\\_conditions.htm](http://www.sgs.com/terms_and_conditions.htm). Attention is drawn to the limitation of liability, indemnification and jurisdiction issues defined therein. Any holder of this document is advised that information contained hereon reflects the Company's findings at the time of its intervention only and within the limits of Client's instructions, if any. The Company's sole responsibility is to its Client and this document does not exempt the parties to a transaction from exercising all their rights and obligations under the transaction documents. Any unauthorized alteration, forgery or falsification of the content or appearance of this document is unlawful and offenders may be prosecuted to the fullest extent of the law. Unless otherwise stated the results shown in this test report refer only to the sample(s) tested. This document cannot be reproduced except in full, without prior approval of the Company.

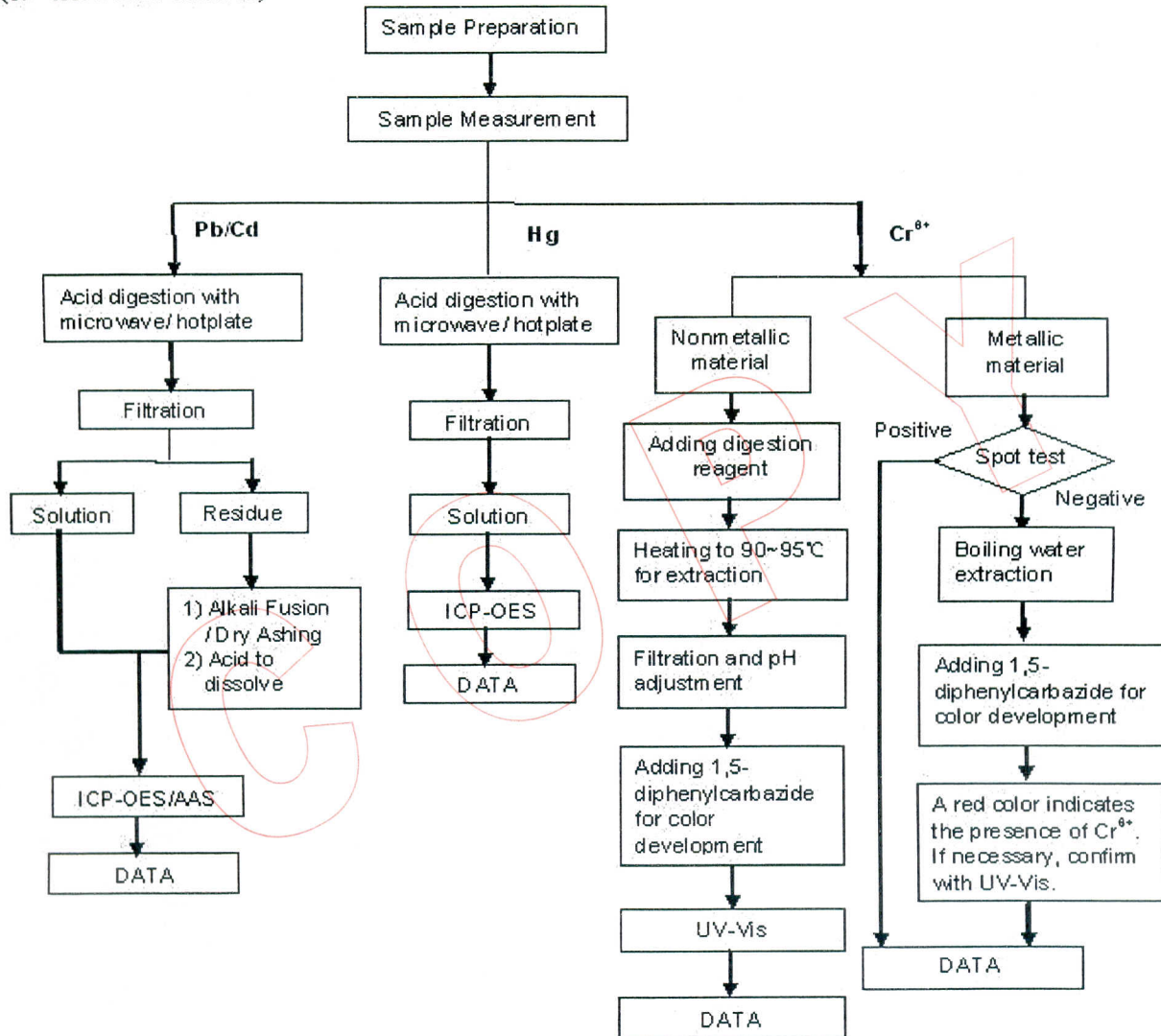


GZCM 2533072

### ATTACHMENTS

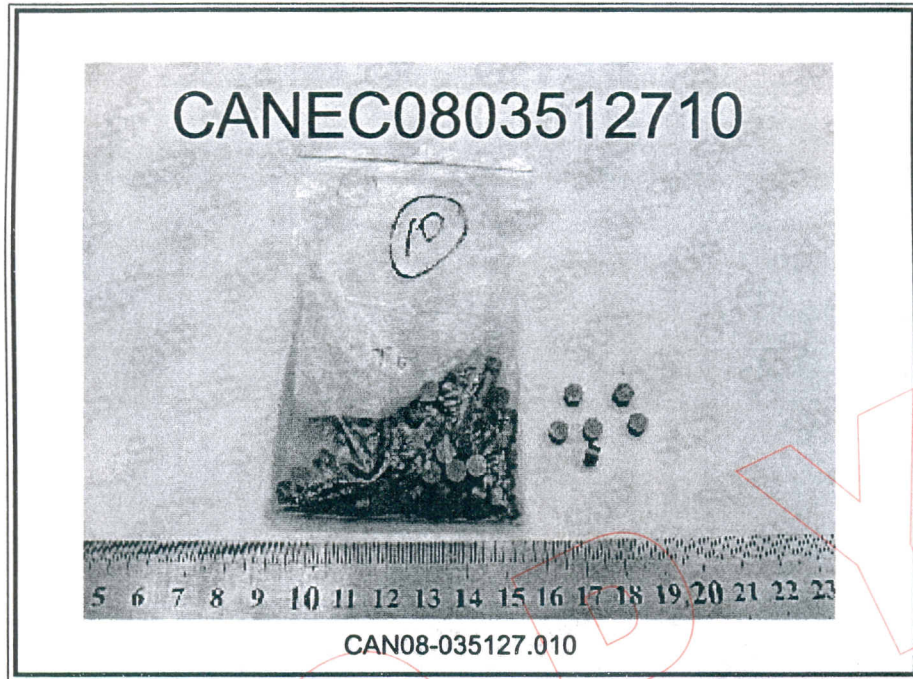
### Testing Flow Chart

- 1) Name of the person who made measurement: Bowen Chen
- 2) Name of the person in charge of measurement: Adams Yu
- 3) These samples were dissolved totally by pre-conditioning method according to below flow chart.  
(Cr<sup>6+</sup> test method excluded)



This document is issued by the Company under its General Conditions of Service printed overleaf or available on request and accessible at [http://www.sgs.com/terms\\_and\\_conditions.htm](http://www.sgs.com/terms_and_conditions.htm). Attention is drawn to the limitation of liability, indemnification and jurisdiction issues defined therein. Any holder of this document is advised that information contained hereon reflects the Company's findings at the time of its intervention only and within the limits of Client's instructions, if any. The Company's sole responsibility is to its Client and this document does not exonerate parties to a transaction from exercising all their rights and obligations under the transaction documents. Any unauthorized alteration, forgery or falsification of the content or appearance of this document is unlawful and offenders may be prosecuted to the fullest extent of the law. Unless otherwise stated the results shown in this test report refer only to the sample(s) tested. This document cannot be reproduced except in full, without prior approval of the Company.

Sample photo:



SGS authenticate the photo on original report only

\*\*\* End of Report \*\*\*

COPY

This document is issued by the Company under its General Conditions of Service printed overleaf or available on request and accessible at [http://www.sgs.com/terms\\_and\\_conditions.htm](http://www.sgs.com/terms_and_conditions.htm). Attention is drawn to the limitation of liability, indemnification and jurisdiction issues defined therein. Any holder of this document is advised that information contained hereon reflects only the findings at the time of its intervention only and within the limits of Client's instructions, if any. The Company's sole responsibility is to its Client and this document does not exonerate parties to a transaction from exercising all their rights and obligations under the transaction documents. Any unauthorized alteration, forgery or falsification of the content or appearance of this document is unlawful and offenders may be prosecuted to the fullest extent of the law. Unless otherwise stated the results shown in this test report refer only to the sample(s) tested. This document cannot be reproduced except in full, without prior approval of the Company.

