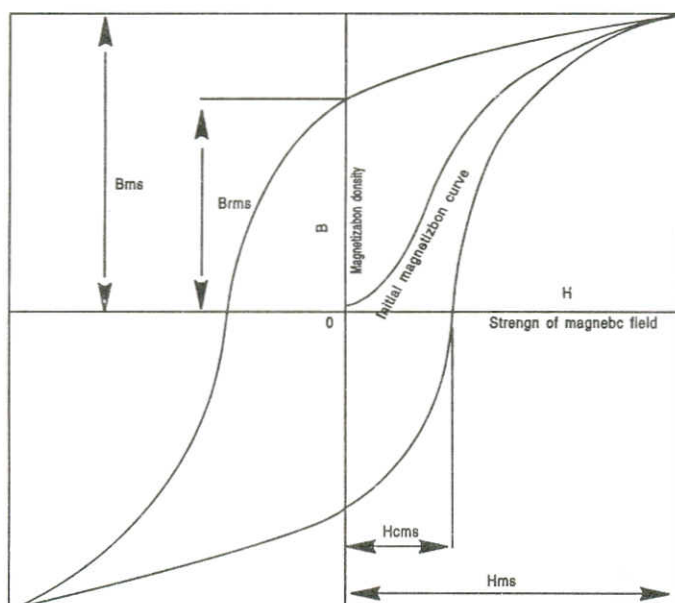


PROPERTIES OF TAK MATERIALS

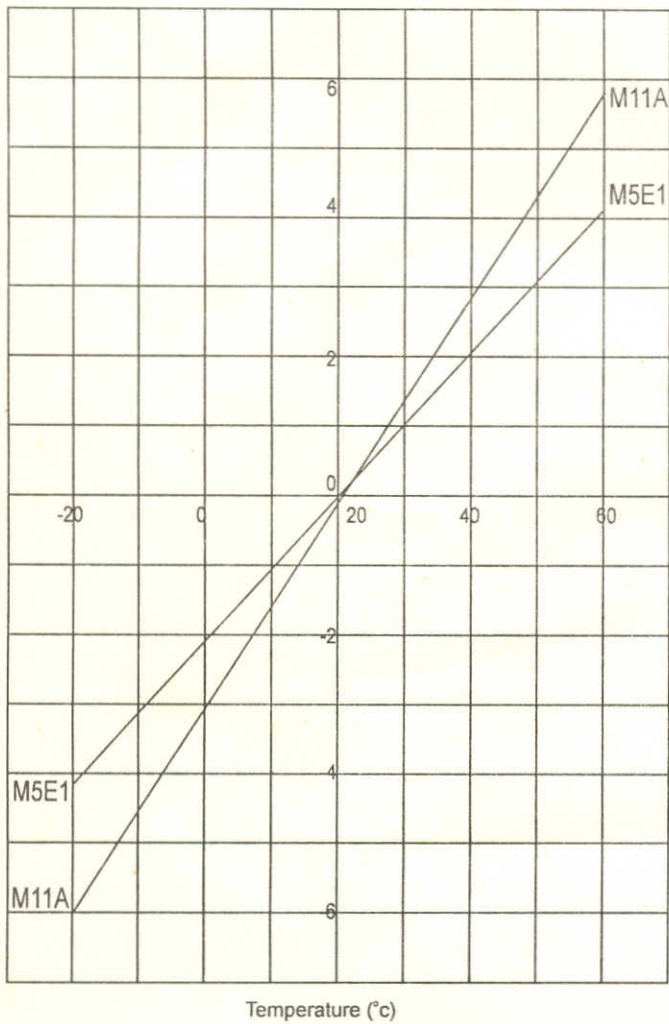
Ni-Zn Ferrite Series (For High Frequency)

CHARACTERISTICS	UNIT	V4F1	V2F1	M5E1	M11A	M9D1	M9A	M8B1	M8C1	M61	MG2
μ_{iac}	—	8	30	15	20	50	50	60	60	100	300
APPLICABLE FREQUENCY	MHz	10-250	3-70	10-120	3-80	1-50	0.5-30	0.5-15	0.5-15	0.5-10	0.1-2
B _m	Gauss	2100	3100	3000	2700	3700	3400	3200	3000	3500	2400
B _r	Gauss	1300	1700	1600	1800	2300	1900	1800	750	2100	1300
H _c	Oersted	38	8	15	10	4	5.5	6	4	2.5	0.8
T _c	°C	300	300	300	300	300	300	300	300	250	150
$\alpha \mu r$	$-6 \times 10^6 / ^\circ C$	10	70	110	80	80	60	15	10	38	9
Tan δ / μ_{iac}	-6×10	600(10) 4000(250)	80(3.0) 400(70)	500(10) 800(120)	100(3.0) 500(80)	200(21) 600(500)	100(0.5) 300(30)	130(0.5) 350(15)	100(0.5) 1500(15)	100(0.5) 1509(10)	20(0.1) 100(2.0)
ρ	Ωcm	10^6	10^6	10^6	10^6	10^6	10^6	10^6	10^6	10^6	10^6

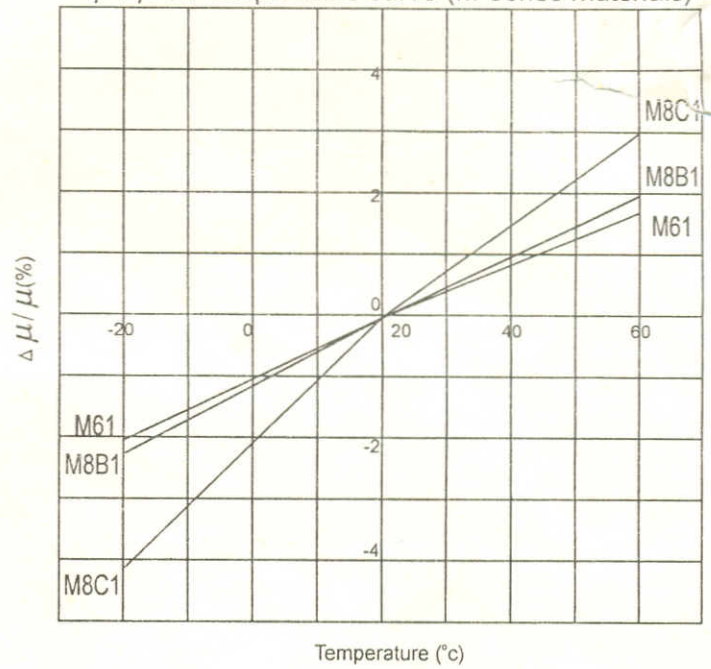


TEMPERATURE CHARACTERISTICS

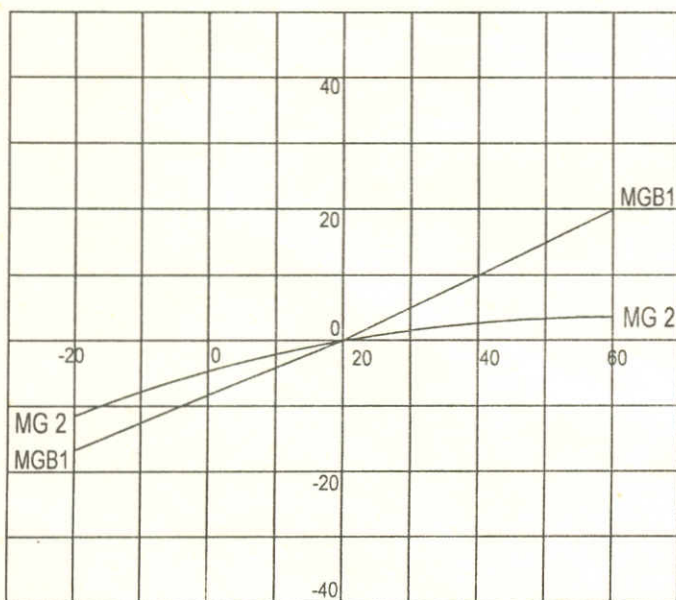
$\Delta \mu / \mu$ Vs. temperature curve (M-series materials)



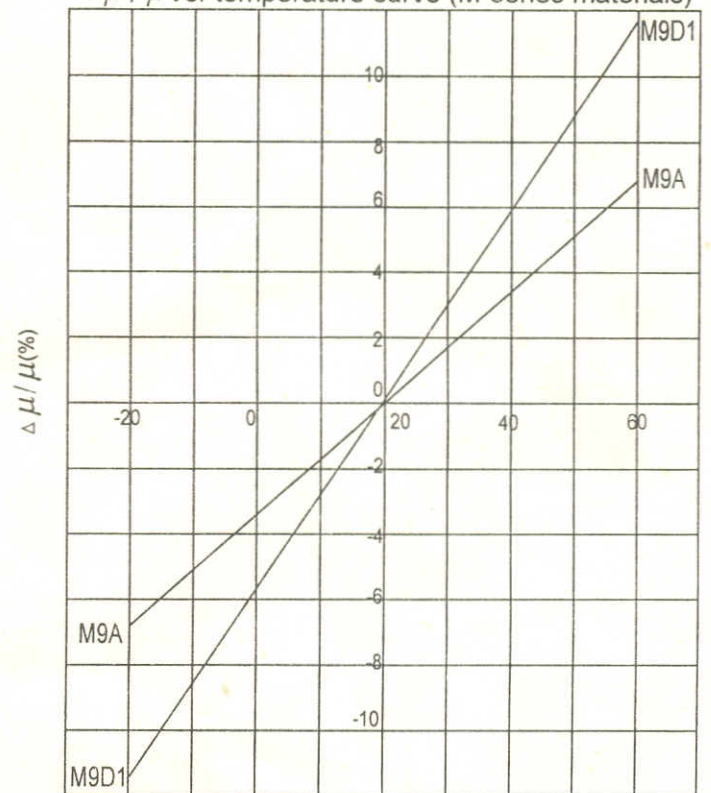
$\Delta \mu / \mu$ Vs. temperature curve (M-series materials)



$\Delta \mu / \mu$ Vs. temperature curve (M-series materials)



$\Delta \mu / \mu$ Vs. temperature curve (M-series materials)



TAK TECHNOLOGY CO.,LTD
NO.3RD INDUSTRIAL AREA JUZHOU SHIJIE TOWN DONGGUAN CITY GUANGDONG PROVINCE
CHINA

The following sample(s) was/were submitted and identified on behalf of the clients as :
M11A MATERIAL FERRITE CORE

SGS Job No. : 11133899 - SZ
SGS Internal Reference No. : 10.3
Date of Sample Received : 02 Jul 2008
Testing Period : 02 Jul 2008 - 07 Jul 2008
Test Requested : Selected test(s) as requested by client.
Test Method : Please refer to next page(s).
Test Results : Please refer to next page(s).

Signed for and on behalf of
SGS-CSTC Ltd.



Huang Fang, Sunny
Sr. Engineer

COPY

This document is issued by the Company under its General Conditions of Service printed overleaf or available on request and accessible at <http://www.sgs.com/terms.and.conditions.htm>. Attention is drawn to the limitation of liability, indemnification and jurisdiction issues defined therein. Any holder of this document is advised that information contained hereon reflects the Company's findings at the time of its intervention only and within the limits of Client's instructions, if any. The Company's sole responsibility is to its Client and this document does not extend to the parties to a transaction on exercising all their rights and obligations under the transaction documents. Any unauthorized alteration, forgery or falsification of the content or appearance of this document is unlawful and offenders may be prosecuted to the fullest extent of the law. Unless otherwise stated the results shown in this test report refer only to the sample(s) tested. This document cannot be reproduced except in full, without prior approval of the Company.





Test Report

No. CANEC0803512703

Date: 07 Jul 2008

Page 2 of 4

Test Results:

ID for specimen 1 : CAN08-035127.003
 Description for specimen 1 : Dk-gray core

Heavy metal(s)

Test Item(s)	Unit	Test Method (Reference)	Result	MDL
Cadmium (Cd)	mg/kg	IEC 62321/2nd CDV (111/95/CDV), ICP-OES	N.D.	2
Lead (Pb)	mg/kg	IEC 62321/2nd CDV (111/95/CDV), ICP-OES	25139	2
Mercury (Hg)	mg/kg	IEC 62321/2nd CDV (111/95/CDV), ICP-OES	N.D.	2
Hexavalent Chromium (CrVI) by alkaline extraction	mg/kg	IEC 62321/2nd CDV (111/95/CDV), UV-Vis	N.D.	2

Note:

1. mg/kg = ppm
2. N.D. = Not Detected (< MDL)
3. MDL = Method Detection Limit

COPY

This document is issued by the Company under its General Conditions of Service printed overleaf or available on request and accessible at <http://www.sgs.com/termsandconditions.htm>. Attention is drawn to the limitation of liability, indemnification and jurisdiction issues defined therein. Any holder of this document is advised that information contained hereon reflects the Company's findings at the time of its intervention only and within the limits of Client's instructions, if any. The Company's sole responsibility is to its Client and this document does not exonerate parties to a transaction from exercising all their rights and obligations under the transaction documents. Any unauthorized alteration, forgery or falsification of the content or appearance of this document is unlawful and offenders may be prosecuted to the fullest extent of the law. Unless otherwise specified the results shown in this test report refer only to the sample(s) tested. This document cannot be reproduced except in full, without prior approval of the Company.

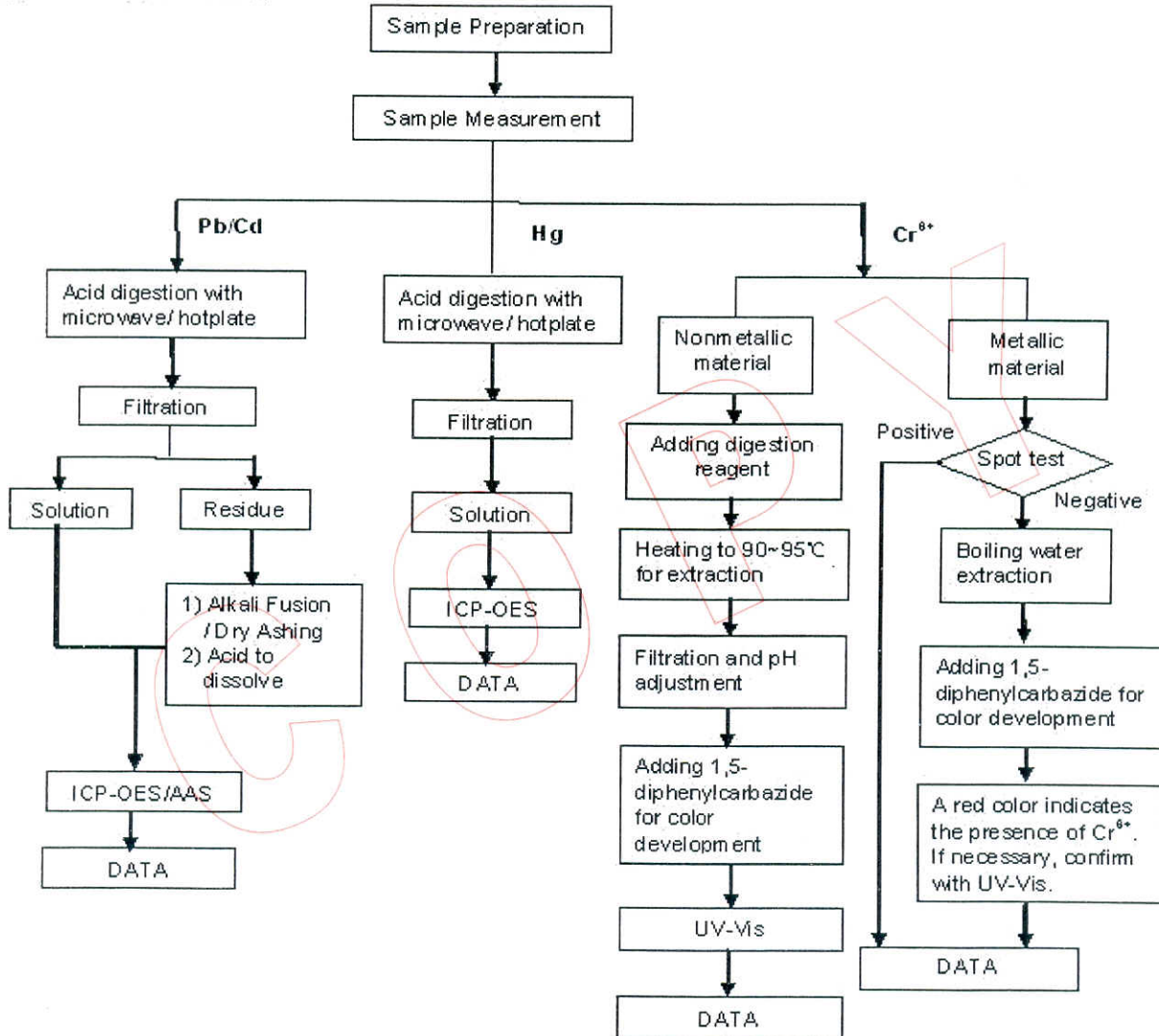


GZCM 2533044

ATTACHMENTS

Testing Flow Chart

- 1) Name of the person who made measurement: Bowen Chen
- 2) Name of the person in charge of measurement: Adams Yu
- 3) These samples were dissolved totally by pre-conditioning method according to below flowchart.
(Cr⁶⁺ test method excluded)



This document is issued by the Company under its General Conditions of Service printed overleaf or available on request and accessible at <http://www.sgs.com/termsandconditions.htm>. Attention is drawn to the limitation of liability, indemnification and jurisdiction issues defined therein. Any holder of this document is advised that information contained hereon reflects the findings at the time of its intervention only and within the limits of Client's instructions, if any. The Company's sole responsibility is to its Client and this document does not exonerate parties to a transaction from exercising all their rights and obligations under the transaction documents. Any unauthorized alteration, forgery or falsification of the content or appearance of this document is unlawful and offenders may be prosecuted to the fullest extent of the law. Unless otherwise stated the results shown in this test report refer only to the sample(s) tested. This document cannot be reproduced except in full, without prior approval of the Company.



Sample photo:



SGS authenticate the photo on original report only

*** End of Report ***

This document is issued by the Company under its General Conditions of Service printed overleaf or available on request and accessible at <http://www.sgs.com/terms.and.conditions.htm>. Attention is drawn to the limitation of liability, indemnification and jurisdiction issues defined therein. Any holder of this document is advised that information contained hereon reflects the Company's findings at the time of its intervention only and within the limits of Client's instructions, if any. The Company's sole responsibility is to its Client and this document does not exempt the parties to a transaction from exercising all their rights and obligations under the transaction documents. Any unauthorized alteration, forgery or falsification of the content or appearance of this document is unlawful and offenders may be prosecuted to the fullest extent of the law. Unless otherwise stated the results shown in this test report refer only to the sample(s) tested. This document cannot be reproduced except in full, without prior approval of the Company.

